

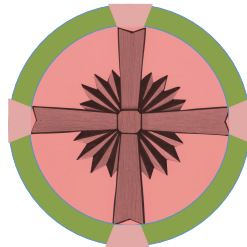
The Anglican Community of

Parksville, British Columbia

Saint Anne & Saint Edmund

~ one open circle ~

a centre for spiritual growth, compassionate action, and creative arts



~one open circle~

growth: compassion: creativity

2018 ANNUAL REPORTS

OneOpenCircle.org



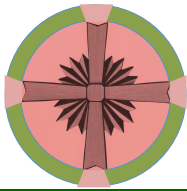
The Anglican Church of Canada

web: OneOpenCircle.org

by phone: 250-248-3114

by email: parksville.anglican@gmail.com

by mail: The Anglican Community of St. Anne & St. Edmund, 407 Wembley Rd, Parksville, BC, Canada V9P 2B2



~one open circle~

The Anglican Community of

Parksville, British Columbia

Saint Anne & Saint Edmund

~ one open circle ~

a centre for spiritual growth, compassionate action, and creative arts

Compassionate Action for 2018-2020: A Profile of Thirty Outreach Programs

St. Anne & St. Edmund is a centre for spiritual growth, compassionate action, and creative arts.

We put our vision into action through outreach programs and ministries of growth and compassionate service on-site among our own members and associates, and we also reach out into the wider world around us, both locally, regionally, nationally, and internationally.

We also collaborate with and support other agencies and organizations co-ordinating their services in areas of compassionate action.

We support outreach in five different ways, serving thirty diverse programs and ministries

Five Ways We Support Outreach

- 1) by volunteer, staff, and management time, and through promoting and encouraging volunteering and philanthropy by our members and associates
- 2) by donating and encouraging direct donations to our own programs and to program of affiliated groups and partners, on-site or in other locations
- 3) by sharing our space with community outreach partners, partially or fully at our own expense
- 4) by holding fundraising events on an occasional or regular basis, and by sending flow-through donations to our community partners and to regional, national and international projects
- 5) through inspirational and educational events, teaching, worship, music, the arts, environmental stewardship, fair-trade practices, congregational activity, and through our Sunday & weekday prayers

We receive revenue in the form of donations and contributions from individuals and from local community partnerships, to support and move towards sustainability in the work of our programs and projects.

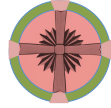
Thirty Outreach Programs & Projects We Support

A) 10 on-site programs: community partnerships in outreach

B) 10 collaborations: local action to support outreach

C) 10 affiliations: outreach in & beyond our region

Compassionate Action



Thirty Outreach Programs

A) on-site programs: community partnerships in outreach

community outreach partnerships where we provide building space, office time, management & support staff time, cleaning & janitorial services, volunteering, partially or fully at our own expense.

we reach out primarily to the following local organizations and outreach groups that support youth, seniors, health, music and the arts, and/or other forms of particular need or special interest on a regular ongoing basis by providing space to our community partners at our own expense, either by offering a nominal "outreach rate" or a modest "community partnership" rate:

- 1) *Spirituality Beyond Borders* – educational programs for transformation on-site, throughout Central Vancouver Island, and by webcast
- 2) *Adult Day Program* – support and activities for those facing isolation/health issues (M/Tu/F)
- 3) *AA, Al-Anon*, other 12-Step programs (M,W,F)
- 4) *Girl Guides, Brownies, Sparks* (M,W,Th)
- 5) *Parksville Tai Chi* (all weekdays)
- 6) *Oceanside Bridge Club* (W)
- 7) *Parksville & District Music Association* (Tu)
- 8) *Quilters group* (Th - monthly)
- 9) *Gentle Fit/Cardio* (M,W) – community health programs focussed on seniors
- 10) *Death Café* – peer-to-peer group conversation over a cup of tea/coffee on the topic of death

B) collaborations: local action to support outreach

- 1 - *SOS (Society of Organized Services)* - comprehensive social outreach, including 29 programs for people of all ages and stages of life
- 2 - *Manna Ministries* (outreach to the homeless in the Oceanside area)
- 3 - *The Foodbank & Soup Kitchen* (Salvation Army programs supported by all the churches and the wider community)
- 4 - *Forward House* (supporting mental health and wellness in our community)

- 5 – *Hospice, Palliative Care Units* - end-of-life care, counselling, and education
- 6 - *Coldest Night of the Year* – fundraiser in support of outreach to the homeless
- 7 - *Echo Theatre* – community theatre productions, social commentary, homelessness outreach
- 8 – *Prayer Shawl, Visitation & Care Homes* - providing local support in times of need, and visiting residents in assisted-living & long-term care
- 9 - *Kairos* - promoting social justice, action, education and advocacy, both locally and nationally
- 10 – *Bethlehem Centre* –diverse spirituality, interfaith, & programs beyond spiritual boundaries

C) affiliations: outreach in & beyond our region

- 1 - *Reconciliation* – engaging with First Nations locally and nationally in engaging with acts and gestures towards reconciliation
- 2 - *The Primate's World Relief and Development Fund (PWRDF)* - global Anglican work in responding to disasters and promoting development (eg forest-fire crises, refugee sponsorship)
- 3 - *Anglican Appeal* - supporting national ministries, and especially those in northern and remote communities, and indigenous ministries
- 4 - *VST & Sorrento* - our regional theological schools and educational retreat centres: Vancouver School of Theology
- 5 - the *Anglican Foundation*, enabling ministry projects across Canada
- 6 - *Canadian Foodgrains Bank (CFGB)* - Canadian-based programs operating globally to respond to world hunger - an ecumenical & PWRDF program
- 7 – *Refugee Ministry* - promoting supportive action, funding, sponsorship and advocacy, on Vancouver Island and beyond
- 8 - *St. Paul's, Corozal, Diocese of Belize*, supporting outreach & elementary education in a context of poverty
- 9 - *Charter for Compassion* - nurturing and educating for a global culture of compassion
- 10 – *The Centre for Action & Contemplation* – satellite programming, delivered and contextualized by *Spirituality Beyond Borders*, from the centre founded by Richard Rohr

The Rector's Report for 2018 *(issued January 2019)*

Dear Friends,

This past year of 2018 has been a richly rewarding time of growth in new directions for us, and I feel very privileged to be your leader in ministry.

Our "Growing Through Teamwork" initiative has borne fruit, and I am delighted that we have had the Rev. Christine Muise join us from her ministry in Golden, BC, to become our Priest Associate at the beginning of September, and delighted for all the new doors in ministry that this has opened up for us. Her experience, gifts, and skills in 10 years of ordained ministry, combined with her warm, welcoming, and inclusive spirit, orientation towards community involvement as a gymnastics coach, lifeguard, and swimming instructor, have provided what many have reported to me as a "seamless" fit and smooth transition, and a "wonderful blending" of ministries to this new start. This has given me a great deal of support and inspiration for our pathway forward in ministry as a community.

If I could name one on-the-ground, day-to-day, blessing that is shaping our life and ministry together as much as anything in the past year, and my relationship to you as a community, it is the joy of now being together in a growing team of shared program, action, and decision-making with two part-time clergy, and two part-time support staff in the office. Thank you, Christine, Kathy, and Mandy!

Through that teamwork, we can highlight avenues of continued growth opening up to us in four areas in particular as we approach our 125th Anniversary this coming year in 2019:

- 1) *Growing Through Teamwork* implementation
- 2) *Spirituality Beyond Borders* program growth
- 3) Steady, multi-year, financial growth patterns, and Sunday offering increases
- 4) Sustainable outreach developments on-site through *Community Partnership* additions

Allow me to present to you a report for my and our activities in 2018 with a prayer of gratitude, and as a point-form list of the highlights and major events.

I am including a separate report on our initiative *Spirituality Beyond Borders*. You can also find details for this ministry online on our website at www.oneopencircle.org/spirituality-beyond-borders.

Your sincere friend, priest, and pastor,



Andrew +

The Rev. Andrew Twiddy

Epiphany, 2019

A Prayer of Gratitude

God of love and compassion, we thank you for all who minister and give of themselves in this place with their time, their talents, and their treasure. We thank you, Holy One, ...

...for those who minister in the proclamation of the gospel through word and sacrament. For eucharistic assistants, preachers, musicians, and choir members, for intercessors, prayer chains, members of the altar guild, sidespersons, and greeters.

...for the tireless work of our wardens and deputies, and in thanksgiving for the love, generosity and service of Julia, Laurel, Catherine, & Dianne, in countless ways in every aspect of our parish life and work.

...for those who have given their skilled, patient, and loving work in constant service to the programs and ministry of this community, in and beyond the parish office, especially giving thanks for Kathy Miller, and for Mandy Truman

... for the dedication and skills of all our parish musicians and volunteers, especially acknowledging David Young, Mariellen Martin, Trisha Daniell, and Andrea Wood

...for Dawn, for her loving and faithful service as co-ordinator of Altar Guild ministry, and for all the care and devotion to the beauty of holiness shown by volunteers in the service of the altar

...for members of parish council, for synod delegates, and all who offer their thoughtfulness and their zeal to serve on committees and task forces to guide and enable the work of ministry in and beyond this parish, and especially in gratitude for the work of Dianne Snider as she completes decades of providing exceptional leadership and service among us, and finally has the opportunity to retire from these labours and enjoy being a part of the choir and congregation.

...for all who plan, advise, facilitate, and administer the work of the parish, for those who assist in the office, for those who administer and oversee the stewardship of finances, donations, and the bookkeeping.

...for all who give attention to the beauty and order of our church buildings, hall, and grounds, and for our fabric artists who have created focal points of beauty for our worship space, especially for Colleen, Elizabeth, and Jeanette

...for those who decorate, for those who clean and tidy and organize, for those who garden, for those who mend & fix.

...for the work of our stewardship and finance officers, and especially for the everyday stewardship, the exceptional stewardship, and the eternal stewardship, of all members of our parish family ...for Michael & Dianne, and their skill and care for the tasks of the treasurer's position, and Shirley for her skill and precision in bookkeeping services

... for all those who give dedicated loving care for our grounds, our cemeteries, and all our facilities, especially for Harry Blackmore, Harry Costerton, Gary Kozie, Eric Miller, and Mariellen Martin

...for those who teach and study and learn, for the work of *Education for Ministry (EFM)*, and for Lynne's inspiring leadership of the *EFM* group, and for other focus groups, and for those who participate in and lead the men's and women's groups

... for our initiative of *Spirituality Beyond Borders*, for the sharing of direction with Pearl Gervais and with Bishop Remi de Roo, and for collaboration with Kathleen Darby, Executive Director of the *Bethlehem Centre*, and our partnership with the Centre for Action and Contemplation in New Mexico, in delivering satellite programming in local groups and in-person contexts through the use of electronic media.

...for those who support ministry with, for, and by, youth and children, for our seasonal youth programmers, for the presence of young people among us as a sign of hope, and the prospect of preparations for youth confirmation programming

...for our initiatives in pastoral care, and for all who extend the pastoral care of the parish to those who are sick, lonely, grieving, in hospital in recovery from an illness, and those confined to their home

...for our work in the care homes of our local community, and especially for the support of Jean and Dawn in the honour we accord to the elders of our community through volunteering in this capacity

...for all who care for our parish hospitality to guests and visitors, and in particular to John and Rick for the welcome and warmth they offer in our Sunday morning services

...for those who care for our kitchen hospitality and who serve others with refreshment, and especially for Ruth and Leona.

...for the work of our special events crew, and for the difference they make in the community by the many days in the year that we hold teas, fundraisers, and community events

...for all on Lasqueti Island who live lives of faith, hope, and love, and who share in building up community life

...for all who work for justice, peace, reconciliation, and who reach out into the community in advocacy and with practical assistance. For the ecumenical work of *Kairos*, and for Beulah, Kathy, and Barb's role and initiative in this ministry

...for those preparing for baptism and confirmation, for those who sponsor and support them, and for those who are renewing and affirming their faith this year

...for those who have received the blessing of their marriage and who have made or renewed their vows in this place, especially Monica and Beni, and Asha and Blake, and for all those marking special milestones in their life

...for Logan our bishop, in his commitment to providing inspiring and visionary ministry and leadership among and beyond us

...for those who mourn the ones they love and give thanks for, but whom they see no longer, and for those who have passed from this life into God's nearer presence in the past year, especially remembering Martin Lane, Jennifer Desvaux, Jim Hutchings, John Hudson, and Ethel Tryon

...with prayers beyond all words for all the Desvaux family: especially for Mark, Juliette, Luke, Sophia, and for Jenny's parents Phyllis & John, as we acknowledge the deep mourning of our whole community and our compassionate love and care for their whole family in their journey of grief at Jenny's passing

...with gratitude for the publication of Jenny's book "The Very Last Monster" as a witness to her creative gifts and ongoing impact in the wider world

God of grace and glory, grant this prayer, we ask, for Jesus Christ's sake. Amen

2018 : Notable Events, Memories, and Highlights

- our weekly Sunday Eucharist ~ the groundbeat of all we do, a house of prayer for all people, a place of growth, learning, and sharing for people of all ages and stages
- worship leadership at the special seasons of worship, particularly involving our young people in leadership at Easter and Christmas
- helping our parish live into its mission & vision as a centre for spiritual growth, compassionate action, and creative arts
- expressing compassion through our ministry in times of grief and transition, especially at our farewell this year to our special friends Martin, Jennifer, Jim, John, and Ethel
- providing leadership and pastoral care and presence for 22 memorial services and burials throughout the year ~ compassion ministry in times of grief and transition
- spearheading the development of many diverse events and programs through our new initiative *Spirituality Beyond Borders*, sharing direction with the Rev. Christine Muise, Pearl Gervais and Bishop Remi de Roo, and developing our extensive programming in partnership with the *Bethlehem Centre, The Contemplative Society*, and our association with the *Center for Action and Contemplation* as the first Canadian satellite campus of the CAC
- sharing worship and programming with children and young people over the course of the year
- expanding our care home ministry on Sunday afternoons and on weekdays, as we recognize the increasing number of our members and associates who are entering care and assisted living
- developing our community relations and community-building ministry through expanding our Community Partnerships program, and applying for and receiving some grant funding from the Vision Fund of the diocese for Spirituality Beyond Borders (SBB) and the Adult Day Program
- sharing locally in our Good Friday service with joint choir and congregational participation with St Mark, Qualicum Beach
- helping shape our music programs and seeking out a roster of musicians to help us give voice to our prayers and our worship
- supporting our office communications and administration through the appointment of paid and volunteer administrative positions and through personal participation in this important work
- outreach support through participation in the "Coldest Night of the Year" program, and through our own fundraising for the Manna Ministries response to issue of Homelessness in our local community

- community involvement through singing in the *Village Voices* choral ensemble
- making personal connections and visits with parishioners facing changing situations in their life, and meeting with new members, associates, and friends
- welcoming the Rev. Heather Robinson as a regular guest preacher, and as a companion in the development of our “Growing through Teamwork” initiative
- stepping through the discernment process for a new Priest Associate, and joyously welcoming Christine and Melissa to our community
- participating in the shared processes of our Diocesan work:
 - clergy days, clergy conference, clergy retreat
 - preparing and providing music for clergy retreat and clergy conference
 - regional clericus meetings (Nimpkish – central and north Island)
 - services of induction for colleagues
- continuing a parish partnership with Theresa Whitely in providing a *Death Café* program on Sunday afternoons, as an expression of moving questions of meaning and spirituality “beyond borders”
- dressing to act the part as the Rev. Canon Charles Cooper in our St. Anne’s Pioneer Day drama and tea
- visiting our centenarian Louise Denbow and hearing her tell me anecdotes and stories over a cup of tea in her home of her first teaching assignment at St. George’s Residential School, Lytton, in January 1935
- participating in the occasional meetings of the Oceanside ministerial association, and playing a part along with other churches in the community’s response to homelessness and social service needs in the wider community
- writing topical articles for “Pastor’s Point” in the local newspaper, the *PQ News*
- celebrating the 500th Anniversary of the Reformation with the regular use of our new parish music booklet featuring the contemporary music of Ron Klusmeier
- experiencing a fruitful time of Lenten hermitage, study, and reflection, for several weeks at Holy Trinity, Madeira
- sharing in the Christmas party of our community partner *Parksville Shores Tai Chi*, and playing piano for their carol sing
- continuing our experimental broadcasting of Sunday morning and other services through the medium of *Facebook live*, and observing how our “online attendance” can augment the wider reach of our ministry
- a shared Anglican & Indigenous blessing of the *ReDress* program as spearheaded by the *University Women’s Club*, in recognition of Missing and Murdered Indigenous Women, with the Rev. Christine Muise, and standing alongside Chief Recalma as a representative of Qualicum First Nation, at both Qualicum Town Hall and Parksville City Hall (November 27)

Report of the Priest Associate for 2018

My interview with the Parish happened from April 20-22 and The Rev. Andrew Twiddy and I met with The Right Rev. Bishop Logan on Sunday April 22nd to discuss the success of this process. I accepted the Appointment on August 1st, 2018 starting on September 1st, 2018 as Priest Associate Half-Time.

My first Sunday in the Parish was August 26th, 2018. It has been such a gift to return to Parish Ministry in such a supportive, affirming and appreciative environment. Through September I learned of the Parish Programming, especially Spirituality Beyond Borders and its affiliation with the Center for Action and Contemplation through Conspire 2018. I also joined in on a session of EfM (Education for Ministry) and Passage Meditation. The Parish of St. Anne and St. Edmunds partners with many community groups making it a hub of activity not only on Sunday but throughout the week. This is very positive.

Andrew left in early October to attend to his mother's death. This gave me the opportunity to get to know the congregation in a deeper way and it gave the congregation the chance to get to know me and to see my specific leadership style.

In the beginning of November, I had the opportunity to attend the Parliament of World Religions in Toronto as Continuing Education and this has infused my preaching, teaching and ministry here in Parksville. I have immense gratitude for this opportunity. Besides Sunday Worship, the Wednesday Spirituality Beyond Borders sessions continued to feed Parishioners and Community Partners alike.

In December, I had permission to run an Advent Series focusing on the Magnificat and a reflection series from Mary's Song Devotional Guide from the Illustrated Children's Ministry and supplemented with Icons and Poetry from the book Mother of God: Similar to Fire Icons by William Hart McNichols with Reflections by Mirabai Starr. Out of this project we had weekly colouring opportunities in the group and on Sunday mornings and the creation of a Christmas Installation that ties together various elements of Advent and Christmas and is relevant through to Epiphany.

I have begun parish visitations and it is my desire to visit 1-3 homes/ care-facilities each week through 2019. In December I had my first opportunity to provide Worship at Arrowsmith Care Home with Pastoral Accompaniment of Jean White, Elizabeth Murphy and Colleen Day.

This year at Christmas I had the opportunity to participate in the traditional services of the Parish. They were each unique and fulfilling and I look forward to actively take part in their planning in the coming years.

Overall, my transition to St. Anne and St. Edmund has been excellent. I am so well pleased and feel so blessed to be here. I also feel very supported in being half-time understanding that this requires me to work outside the parish. I have been coaching at Flipside Gymnastics 2 evenings a week since September and was officially hired on at Ravensong Pool in November as a Casual Lifeguard and Swim Instructor.



Symbols used in the Advent Banner:

These symbols came out of study and discussions of the Advent Craft Group. The ideas inspired line art drawings, which were translated into fabric by group members.

Flowers (Bleeding Heart)	Trinity in eternity	Loving Hands	Cracked Stone Heart, with light and life emerging	Dragonflies	8 pointed star M'ikmaq symbol of hope
Tree of Life	Love	Hands		Hope	Dove/olive branch
Celtic symbol of Eternal Love	St Anne's representing our church family	Hands	Outstretched Hand		Lighthouse (Beacon of Hope)
Sunrise, sunshine, Sunset	Advent Candles	Droplet of water	Eagle feather representing discussion without argument	Earth from Space with no borders	Kwanzaan symbol of Unity
Singing	Joy	Dancing with joy	Red Dress (Peace can only come through reconciliation)	Peace	Crossed palms as if holding present
Ocean wave	Butterfly	Communion		Triskelion depicted as a walking path for meditation	Music

PARISH REGISTER 2018

MEMORIALS/FUNERALS/BURIALS (22)

Jan 15	Terence Leonard Bartsch
Jan 19	Doris McWilliams
May 5	William <u>Wayne</u> Abbot
May 17	Martin John Lane
June 3 (&7)	Jennifer Jeanene Desvaux
July 7	John H.R. Wright
July 7	Patricia E D Wright
Aug 2	Dawneen Cooper-Allen
Aug 11	John M.C. Wright
Aug 11	Jessie Margaret Sparkes
Sept 04	James George (<u>Jim</u>) Hutchings
Sept 22	James Edward Stewart
Sept 23	Albert <u>Howard</u> Orcutt
Oct 01	Ann Rosemary Conway
Oct 6	John Frederick Hudson
Oct 14	Ethel (<u>Mickey</u>) Forrest
Oct 22	Robert Schoyen
Nov 17	Judith Claire Lee
Nov 20	Catherine Gray
Nov 24	Ethel Tryon
Dec 13	Harry Richard Sumner
Dec 28	Ernest Andrew (<u>Andy</u>) Butler

WEDDINGS/BLESSINGS (2)

March 4	Monica Ciolfi & Beni Randrianosdavinjanahary
July 7	Asha Kinfuita & Blake Koel Reavely

WARDENS' REPORT for 2018

Our parish was very busy last year with many exciting and productive things happening.

With the assistance and blessing of Bishop Logan the wardens along with Andrew and a few members of Parish Council embarked on a discernment process to select an Associate Priest to join Andrew in pastoring our congregation. We were fortunate to have several candidates to choose from but it was a unanimous decision to select Christine Muise who joined us in September. Christine and Melissa moved to Parksville last summer and we are so blessed to have them here.

The Sunday school room was converted into an office for Christine and many thanks go to those who helped with that process by emptying the room and repainting it. Thank you especially to Sue Packer for her great work with the paintbrush!

An egress window was installed in the new office and window coverings were installed at the same time. Christine now has an attractive and functional office.

New kitchen flooring was installed in July and the dish sanitizer was removed and reinstalled at the same time. All this work was completed within the budget approved by Parish Council.

We continue to partner with the wider community by providing partnership space for a wide range of activities and programs. We are glad to see the West Coast Recreation Adult Day Program expand to two days a week. The Spirituality Beyond Borders program continues to be very popular and brings new members to our congregation.

Hearty thanks to those who work diligently to keep our parish running smoothly e.g. the hospitality group, the gardeners and handymen, Kathy and Mandy with the office work (and many other jobs that they do!), the musicians especially Mariellen Martin with her beautiful harp music and many others who make this church such a loving and caring community.

Julia Macdonald, Rector's Warden
Laurel McNair, People's Warden

PROGRAM & MINISTRY REPORTS FOR 2018

St. Anne & St. Edmund: Hospitality Report for the Year 2018

St. Edmund's first event of 2018 was once again the beautiful art of converting ordinary raw eggs into intricate masterpieces of creativity and careful colourful dyeing to produce spectacular one-of-a-kind Pysanky (Ukrainian Easter Eggs). This year we had the unfortunate incident of one nearly completed creative egg leaving its owner's hand, rolling off the table and going 'SPLATT!' on the floor. We could have cried!

Our tasty social events started with Shrove Tuesday's Pancake Supper hosted by our male parishioners who encouraged our youth to give a helping hand. A delicious supper – thank you! Our traditional Seder Supper this year was replaced with everyone contributing to a delightful potluck. Church participation in our Easter 'traditions' after the meal brought the meaning of Easter closer to our hearts. The month of May once again sprung spring flowers to be presented to each of our ladies on Mothers' Day. The gentlemen of our Parish waited patiently, and on their big day in June were rewarded with a tasty chocolate treat baked and wrapped just for them. St. Anne's Heritage Day & Tea arrived upon us in July with great pioneer stories, lovely costumes, talented actors and smiling, lively participants combined with scrumptious strawberry shortcake. Attendance was a little lower than last year but watch out 2019!! Our fall 100-Mile Family Potluck Luncheon brought out a large variety of local food and healthy appetites. On All Saints Day in November, our appetites were once again stimulated with a homemade appreciation luncheon. Remember - we are worth it! 2018's social events were brought to its close by celebrating the Christmas Spirit with one last tasty, finger-licking-good Christmas Potluck!

Our smiling and dedicated Sunday Morning Refreshment Groups continued to greet us in 2018 with their cheery smiles, great coffee and fantastic goodies! They continue to surprise us! Ruth O'Hara and her staff provided interesting refreshments to our Spirituality Beyond Borders Series held both in Spring and Fall. Thank you, ladies. Our guests appreciated your tasty snacks. On a very sad note, we had to say farewell to two of our Parish friends at which time our ladies provided refreshments.

Fundraising for 2018 started in May with our Spring Plant/Garage/Bake Sale being a great success. It continued into July with St. Anne's Heritage Day & Tea and ended with a BANG – a very successful Christmas Bazaar. We had a terrific year - enjoying great results for our hard work! Thank you so much to each and every one of you for contributing in your own way! It all comes together to make one huge successful event! Doesn't it make you feel good?

Thank you to our events co-ordinators who without them, where indeed would we be? In previous years, I have forgotten to mention our Easter butterflies. Thank you to Jeanette Hawkes who spent hours several years ago showing us how to make them and who sets them free every Easter to fly above the altar. Thank you to the ladies who braved the heat every Tuesday during July and August to greet visitors at St. Anne's - partaking of conversations and sharing the history of our church and cemetery. With the vision and guidance of Colleen Day, Elizabeth Murphy and Rev. Christine Muise, our ladies journeyed this year into a Christmas Advent Adventure of creating a beautiful mural masterpiece – four large squares depicting Peace, Hope, Love and Joy in our community. Thank you to all (adults and children alike) who helped with either the construction of the fabric mural residing proudly above our altar or the colouring of the five paper banners soon to be hung on our walls.

Thank you to my hubby Victor who continues helping me pound in those fundraising signs and to the dedicated volunteers who take care of the grounds, the altar, the music and those who transformed the Sunday School Room into Christine's office. Thank you, Kathy & Mandy, for your assistance on our many calls for 'H-E-L-P!' To our many parishioners who so willingly give of their time and talents to make each occasion successful and memorable – **THANK YOU!** There is one thing that I continuously say each year – our parish is indeed truly blessed with kind, generous people who keep giving of themselves. Thank you for being you

Respectfully submitted by Leona Uniat, Hospitality & Special Events Co-ordinator

St. Anne & St. Edmund, Parksville: 2018 Hospitality Calendar of Events

JAN			Relaxation Time or Continue Celebrating	
FEB	Tue	13	Shrove Tuesday Pancake Supper	(Men Co-ordinating)
	Sun	25	Ukrainian Pysanky Workshop (Egg Dyeing) 11:45 am	(Jeanette Co-ordinating)
MAR	Thurs	29	Maundy Thurs. Supper (11:45 Hall Setup) 6:00 Supper	(Ruth/Heather Co-ordinating)
	Fri	30	Good Friday (with St. Mark's)	
	Fri/Sat	30/31	Put up Butterfly Netting	(Jeanette Co-ordinating)
APR	Sun	1st	Happy Easter! (No, not a joke!)	
MAY	Fri	11	Setup for Plant Sale 11:45 am	(Leona Co-ordinating)
	Sat	12	Plant, Bake & Garage Sale 9:00-noon	
	Sun	13	Mother's Day - Appreciation Goodies	(Dawn)
	Wed	23,30	Refreshments for Spirituality Beyond Borders, 9:15am & 6:15pm	(Office Co-ordinating)
JUNE	Weds	6-27	Refreshments for Spirituality Beyond Borders, 9:15am & 6:15pm	(Office Co-ordinating)
	Sat	8	Hall Setup for Barbeque 10:00 am	(Leona Co-ordinating)
	Sun	9	Parish Barbeque 11:30 am	
	Sun	17	Father's Day - Appreciation Goodies	(Leona)
JULY	Tuesdays		St. Anne's Open House 10:00-2:00 pm	(Julia Co-ordinating)
	Fri	20	Hall Setup for Heritage Tea 11:45 am	(Beulah/Ruth Co-ordinating)
	Sat	21	St. Anne's Heritage Day & Tea 1:00-4:00 pm	
AUG	Tuesdays		St. Anne's Open House Continues 10am-2pm	(Julia Co-ordinating)
	Fri 31-Sun Sept. 2		Provide Refreshments – Spirituality B. Borders	(Office Co-ordinating)
SEPT	Sat/Sun 1,2		Provide Refreshments – Spirituality Beyond Borders continues	
	*		Order fruit for Fruit Cakes	(Julia co-ordinating)
	Sat	29	Hall Setup for Sunday Potluck 10:00 am	(Leona Co-ordinating)
	Sun	30	100 Mile Family Potluck Luncheon 11:30 am	(Leona)
OCT	*		Baking Fruit Cakes	(Julia Co-ordinating)
	TBA		Hospitality Meeting for 2019 Events	(Leona)
	Wed 24, 31		Refreshments for Spirituality Beyond Borders, 9:15am & 6:15pm	(Office Co-ordinating)
NOV	*		Baking Goodies for the Bazaar	
	Sat	3	Hall Setup for Sunday's Luncheon 10:00 am	(Leona)
	Sun	4	Parish Appreciation Luncheon 11:30 am	(Leona/Dawn Co-ordinating)
	Weds	7-28	Refreshments – Spirituality Beyond Borders 9:15am & 6:15pm	(Office Co-ordinating)
	Fri	30	Christmas Bazaar Setup 11:45 am	(Leona Co-ordinating)
DEC	Sat	1	Christmas Bazaar 10:00-2:00 pm	
	Sat	15	Hall Setup for Sunday Luncheon 10:00 am	(Leona Co-ordinating)
	Sun	16	Christmas Potluck Featuring Finger-Food 11:30 am	(Leona)

EfM (Education for Ministry / Exploring Faith Matters)

This vibrant, multid denominational group of 12 students and 3 mentors continues to meet in the library at St Edmunds on Tuesday afternoons. Group members represents four Anglican parishes, the United Church and the Catholic Church. They travel to Parksville each week from Nanaimo, Denman Island and Courtenay.

In May, Bishop Logan McMenamie presided at a graduation ceremony for Kathy Miller and Dawn Ragan of this parish.

After twelve joy-filled years of mentoring I remain committed to seeing the current students through to the end of the course. However, because aging is a reality, I cannot commit myself to this ministry beyond that. For this reason, the decision was made not to accept new students for this current study year. Unless new mentors come forward to keep it going, this EfM group will wind down in May, 2021.

Submitted by Lynne Downes (Administrative Mentor)

PRAYERS OF THE PEOPLE

I would like to thank all the members of this team who continue to offer prayers each week. I do know how challenging this can sometimes be.

Sadly, Diane Snider has resigned from the prayer team. Diane has enriched the prayer life of this parish for very many years. We are grateful for her heartfelt dedication to God that was so evident in her prayers. Thank you Diane.

I am grateful to Jean Steinkey who has agreed to participate in this ministry. I have no doubt that her gifts will guide and flavor her prayers. Welcome, Jean.

Submitted by Lynne Downes (Co-ordinator)

CHALICE BEARERS

There have been no changes to this ministry team this year.

My thanks to all members. At the heart of our Sunday liturgy, by sharing Christ's cup with the congregation, these people are sharing who Jesus was and reminding us of our unity in Christ.

Submitted by Lynne Downes (Co-ordinator)



spiritualitybeyondborders.org

Summary Report for January 1 - December 31, 2018

Vision:	Education for Transformation
Mission:	To provide dynamic educational programming with supportive contemplative practices that lead to transformative learning experiences and spiritual growth
Teacher & Host:	Andrew Twiddy
Directors:	Andrew Twiddy, Christine Muise (new for 2018), Pearl Gervais, Remi de Roo
Accreditation:	Satellite community of the <i>Centre for Action and Contemplation</i> (cac.org)
Satellite Goal:	to offer an experiential learning interface and Canadian West Coast destination for the resources of the <i>Center for Action & Contemplation</i>
Collaboration:	Bethlehem Centre (Nanaimo), The Contemplative Society, Anglican Diocese of BC, St. Anne & St. Edmund, Parksville

1 Programs & Events

- regular programs/events delivered in Central Vancouver Island during Jan-Dec 2018: conferences, retreats, webcasts, midweek series, including *Conspire 2018* (3 formats), *A Spirituality for the Two Halves of Life* (4 formats), and featuring spiritual teachers: *Richard Rohr, Paula D'Arcy, Barbara Holmes, Barbara Brown Taylor, Brian McLaren, Mirabai Starr, Eknath Easwaran*
- 2 new and continuing/ongoing programs for contemplative practice: *Passage Meditation, Stillness at the Centre*, with facilitation by practitioners David Shadbolt & Andrew Twiddy
- Dances of Universal Peace, featuring teachers Joanne & Richard Sales
- Death Café – tabletop conversation about death - facilitation by Jane Loney & Teresa Whiteley
- events held St. Edmund, Parksville, and at the Bethlehem Centre (Nanaimo)
- Satellite community of the *Centre for Action and Contemplation* (cac.org) as of Nov 2017
- collaboration with Bethlehem Centre (Nanaimo), The Contemplative Society
- technology, communications, staffing, and webwork evolving to support/promote programs: browse for details at www.oneopencircle.org/spirituality-beyond-borders

2 Participation

- approximately 150 different program participants since inception in April 2017
- most participants from Central Vancouver Island (range: Salt Spring/Cowichan to Comox Valley)
- some participants from Metro Victoria/Vancouver/BC interior
- Anglican participation at about 50%,
- ecumenical/interfaith/SBNR [spiritual-but-not-religious] participation about 50%

3 Relationship to Diocesan Vision Priorities

- four diocesan vision priorities for *Spirituality Beyond Borders*:
- educational faith formation through diverse and interactive programming
- reconciliation in action across religious and spiritual boundaries
- emerging and dispersed spiritual community based in Central Vancouver Island
- “north-of-the Malahat” (non-metro-area) regional ministry development



spiritualitybeyondborders.org

teacher & host: Andrew Twiddy

*offering an experiential interface and Canadian West Coast destination
for the resources of the Center for Action & Contemplation*

2018 Program Highlights

June Lakeside Retreat:

Loving Both Halves of Life's Journey

Sun June 10, 4.00 pm – Tues June 12, 12.30 pm

featuring **Paula D'Arcy & Richard Rohr**

(guided contemplative experience,

dynamic engagement with classic CAC materials)

NANAIMO, BC

info@bethlehemcentre.com

Summer 2018 Webcast Live:

The Path of Descent ~ How to Fall Upwards!

Friday August 31 – Sunday September 2

featuring **Richard Rohr, Barbara Holmes,**

Barbara Brown-Taylor, Brian McLaren

and more *(dynamic engagement ~ in-person*

hosting, "Conspire 2018" live, contemplative experience)

PARKSVILLE, BC spiritualitybeyondborders@gmail.com

Spring 2018 Oceanside Series:

Loving Both Halves of Life's Journey

Wednesdays, May 23 – June 20

featuring **Paula D'Arcy & Richard Rohr**

(guided contemplative experience,

dynamic engagement with classic CAC materials)

morning/evening session choices (9.15 am/6.15 pm)

PARKSVILLE, BC spiritualitybeyondborders@gmail.com

September Lakeside Retreat:

The Path of Descent ~ How to Fall Upwards!

Sun Sept 9, 4.00 pm – Wed Sept 12, 12.30 pm

featuring **Richard Rohr, Barbara Holmes,**

Barbara Brown-Taylor, Brian McLaren

and more *(dynamic engagement ~ in-person*

hosting, current webcast, contemplative experience)

NANAIMO, BC

info@bethlehemcentre.com

Fall 2018 Oceanside Series:

The Path of Descent ~ How to Fall Upwards!

Wednesdays, Oct 24 – Nov 28 (2018)

featuring **Richard Rohr, Barbara Holmes,**

Barbara Brown-Taylor, Brian McLaren

and more *(dynamic engagement ~ in-person*

hosting, current webcast, contemplative experience)

morning/evening session choices (9.15 am/6.15 pm)

PARKSVILLE, BC spiritualitybeyondborders@gmail.com

SBB directors:

Andrew Twiddy, Pearl Gervais, Remi de Roo

**~ further webcasts, as announced, from the
Center for Action and Contemplation (CAC) ~**

spiritualitybeyondborders.org



Prayer Chain Report for 2018

To be a Christian without prayer is no more possible
than to be alive without breathing. Martin Luther

The Prayer Chain operates in the background of the parish. Prayer is often a silent action and not a public event. The members pray at a time of their choosing in the comfort of their homes. They are given the names and situations requesting petition by email or phone call. They are not required to attend meetings, pay dues or record minutes. All that is asked is that they add the names given to their daily prayers. Our ladies are happy to do this small thing for those in need at home or around the world. We are a small group and would be happy to have you join us in this endeavour.

I thank all our ladies for their attention to this mission and also give thanks to Andrew and Christine for their guidance..

We have a Heavenly Father who is willing and more than able to bring victory to any challenge we face. He does not always give us the answer we wish for right away, but he does hear and attend to our requests in his way and his time. "He can do more than we can ask or imagine."

Please keep us in your prayers.

Respectfully,

Jean White for
Faye Boggs
Lynne Downes
Kathy Miller
Beulah Paugh, our Sunshine Lady
Dianne Snider,
Barbara Woodstock

Scripture Readers Report for 2018

Each Sunday we have two parishioners reading the scriptures for us. These folks generously offer their time and talents to the church so we can hear the written word. At this time we have about fourteen readers and I give thanks for them and their cooperation in this mission. In each two-month period they step forward one or twice to present the New Revised Standard Version and The Message.

The Roster of Readers is posted on the bulletin board in the hall outside the office. Sometimes we have to juggle a few dates but usually the schedule runs smoothly. On occasion I have to ask for extra help and I want to thank those who read on very short notice. They are a blessing. If you have questions, concerns or would like to read for us please contact Andrew or myself. We are happy to speak with you.

Respectfully, Jean White

Coffee Grounds Report for 2018

It is hard to see another year gone but we look forward to good things for 2019. We give thanks for the coins left in the bowl from our friends at coffee time. It may seem a small gesture but we put the funds to good use in our parish life. It all goes to make our church a more welcoming place in which to worship and share fellowship.

This past year, over and above the purchase of coffee, tea, cream and sugar the monies helped a parish family at a difficult time. We also gave to the Pancake Luncheon and later in the year we donated funds to the church to be used at the discretion of the parish, to assist in the improvements made to the hall. If you have any concerns or suggestions please speak to either of us.

Thanks again for your support of this mission and for the cooperation of the Kitchen Crew who show up every Sunday to prepare the refreshments and serve us all.

Respectfully,
Bob Olmsted, Jean White

Music Ministry Report

Did you know that singing is good for your health? Studies have shown that singing improves lung function , resulting in more oxygen in the bloodstream.

Singing provides memory training and improves mental alertness so the Alzheimers' society uses singing to help people who have dementia and alzheimers disease. Singing improves our mood and decreases stress, depression and anxiety.

Singing in a group gives us a sense of belonging to something bigger than ourselves, a feeling of community and the thrill of creating something beautiful. And it is so much fun!!!

I feel closer to God when I am singing, especially singing in church. We are told the angels in heaven are forever singing so why not us? Come and join us on a Sunday morning at 10 a.m. or at 9 a.m. if you want to practise with us first. *No audition required!*

I want to thank all those great people who join us for special occasions and also a big thank you to Mariellen Martin for her lovely music on the harp!

Respectfully submitted by Julia Macdonald

St. Anne's Heritage Day July 21, 2018

St. Anne's Heritage Day was once again celebrated at St. Anne's Anglican Church in Parksville with a remembrance of the lives of four pioneers from its earliest settled history.

Florence Cheney Parks (Sue Packer), Jane Hirst, wife of Albert Hirst (Lyn Makepeace), Elizabeth Talbot Rath (Barbara Paterson), and Rev. George Arthur Bagshaw (Julian Packer) came to life through their "own" words and those of narrators Rev. and Mrs. Charles E. Cooper (Rev. Andrew and Sandy Twiddy) as they told their stories of toil and friendship that endured more than fifty years.

Following the performance, an elegant tea room set up in the Church Hall provided tea and strawberry shortcake to visibly receptive guests.

Seventy-seven tickets were sold for the two performances at \$15.00 each. In the words of one attendee, "Advertising excellent, script likewise, food super, ambiance great!"

Income:		\$1155.00
Expenses:	Cake	\$30.00
	Strawberries	59.85
	Dairy & coffee	32.41
Net:	\$122.26	\$1032.74

(Numerous anonymous in-kind donations from participants of the event as well as others provided flowers, blueberries and various miscellaneous extras which contributed to the final proceeds of the day.)

This year's celebration was challenged by a lack of available workers to carry out the multitude of tasks required to produce this event. This included everyone from ticket takers and flower arrangers to readers of the stories, kitchen workers and tea room servers.

It was also a disappointment to the three dozen or so workers who had put in so many hours of work both prior to the Day and during the Celebration, that we did not maximize our potential audience. Another 40 people could have been seated.

Discussions have already begun, to explore how we might increase the range of our recruitment for workers next time, as well as how to expand our reach regarding ticket sales.

A Big Hand to Our Workers:

Our audience/tea guests were obviously very pleased with their afternoon's entertainment. A huge debt of gratitude is owed to each person who cleaned up the grounds and church, sold tickets, made bouquets and posies for each tea table, filled the fir-lined sanctuary of St. Anne's with voices from the past, and served 77 people with fresh strawberry shortcake and tea.

Submitted by Catherine Whiteley

Nominating Committee Report & Recommendations to Parish Council

January 14, 2019

The role of the nominating committee is to provide names of people willing to stand for various elected positions within the life of the parish, and in particular to make recommendations to parish council, for consideration at the Annual Vestry Meeting.

Currently, the work of this committee is handled by the members of the leadership team of the parish, namely the two wardens, the deputy wardens, a synod delegate, and the treasurer, working in consultation with the Rector and Priest Associate.

1) The Committee has taken note of the following **resignations and appointments**, effective Feb 03, 2019, unless otherwise noted:

- Julia MacDonald, resigned as Rector's Warden, and appointed as Past Warden, with capacity to act as Deputy Warden as needed, for one-year term
- Catherine Whiteley, resigned as Deputy Rector's Warden, and appointed as Rector's Warden
- Dianne Snider, term completed and resigned as treasurer, and resigned from deputy wardenship and leadership team, in order to retire from office-bearing ministry in the parish
- Julian Packer, appointed by the Rector and Wardens as treasurer (annual term, renewable)
- Michael Allen, reaffirmed as associate treasurer in advisory capacity (annual term, renewable)
- Leona Uniat, term on council completed and retiring from voting membership on council
- Leona Uniat, appointed by the Rector and Wardens in *ex officio* capacity to Parish Council (with voice, without vote), as Special Events Co-ordinator (annual term, renewable)

2) The committee has obtained the consent of **the following people to stand for election to office** at the AVM set for Feb 3, 2019:

For election to **Parish Council**, beginning Feb 3, 2019:

Elizabeth Murphy, Member-at-Large

For election as **Synod Delegates**, beginning Feb 3, 2019:

Catherine Watson, Julian Packer, Laurel MacNair

For election as **Alternate Synod Delegates**, beginning Feb 3, 2019:

Catherine Whiteley, Jill Owen-Flood, Sue Packer

For election as **People's Warden**, beginning Feb 3, 2019:

Laurel MacNair, People's Warden

Motions on File:

1) "That we nominate the above-mentioned people for election at the Annual Vestry Meeting"

M/S/C:

2) "that, in recognition of the appointment of a Past Warden to act as a Deputy Warden, we leave the two Deputy Warden positions vacant until the next Annual Meeting"

M/S/C:

Minutes of the Annual Vestry Meeting

St Anne & St Edmund, Parksville

February 4, 2018

31 in Attendance : list on file

Chair: The Rev. Andrew Twiddy

1.
Preliminary remarks and Opening Prayer: by Andrew at 1215 hours
2.
Appointment of Note-taker/secretary: by acclamation, the meeting concurred with the chair's appointment of Laurel MacNair as note-taker and secretary for the annual 2018 Vestry meeting.
3.
Adoption of Agenda: Agenda presented by Andrew.
Adoption of agenda moved by Dawn Ragan and seconded by Ruth O'Hara. Motion carried
4.
Minutes of 2017 Annual Vestry Meeting: Lynne Downes moved adoption of the minutes of the annual meeting. Catherine Whiteley seconded. Motion carried.
5.
Motion to receive all nonfinancial reports: Andrew reviewed the basics of his report and also provided background on upcoming diocesan proposal for a financial campaign. A number of questions arose and were addressed. The general focus of the diocesan financial campaign is to support parish ministry and to foster new ministries through our Vision Fund in our Diocese (eg Spirituality Beyond Borders).

Marg Brewin moved all reports of non-financial records be received, seconded by Julian Packer. Motion carried.
6.
Financial reports: Michael Allan reviewed the financial reports for 2017 including income and expenses. Motion to receive the 2017 financial reports by Michael Allen and seconded by Jill Owen-Flood.
Motion carried.
7.
Budget for 2018, Budget projection for 2019:
Adoption of the proposed budget for 2018 by Michael Allen and seconded by Rick Ragan.
Motion carried.

8.

Nominating Committee Report: Andrew provided thanks to a number of Council and Leadership members (Michael Allen is resigning his position as treasurer and will become our Assistant Treasurer and consultant accountant. Ruth O'Hara will be leaving the Leadership Team but will remain on Council. Jean White will also be leaving Leadership after many years of service). Julia MacDonald will become Andrew's Warden, Catherine Whitely will be Deputy Rector's Warden.

Catherine Whitely provided a brief overview of the Nominating Committee report (p.20 of the 2017 Annual Reports) in preparation for the process of elections.

For election to parish council:	Betty Endersby
For election as Synod Delegates:	Catherine Whiteley, Julian Packer, Laurel MacNair
For election as Alternate Synod Delegates:	Ruth O'Hara, Jill Owen-Flood, Catherine Watson
For election as People's Warden and Deputy:	Laurel MacNair, People's Warden Dianne Snider, Deputy People's Warden

9.

Elections and appointments: Sue Packer moved that the slate of those asked to stand for election be accepted and that all other nominations cease. Leona seconded the motion. Motion carried.

10.

Other items of Parish business: we enjoyed 10 minutes of table top conversation by those present regarding the reports for 2017 and plans for 2018. Feedback provided by a number of people. Eg building needing painting and general maintenance; ensuring monies for the maintenance of St Anne's as a heritage building.

11, 12.

Motion of Loyalty to the Queen and support for Bishop Logan: moved by Elizabeth Murphy and seconded by Julian Packer. Motion carried by acclamation

13.

Adjournment and closing prayer: 1:20 pm.

Attachments on file:

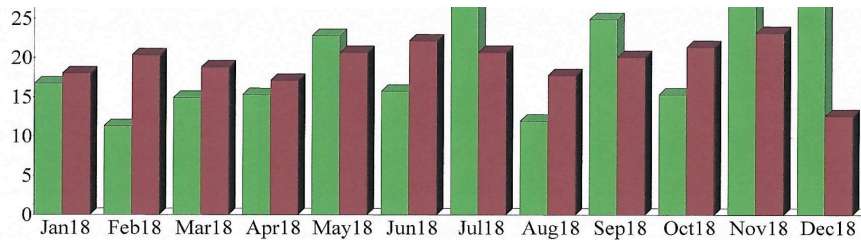
- 1) Agenda
- 2) 2018 Budget
- 3) Attendance List (31 names)

Financial Reports for 2018

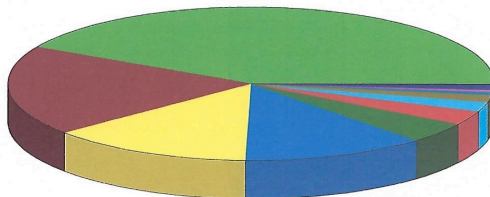
Three Highlights:

- 1) Operational Revenue: \$158,000 (2013) → \$233,000 over 5 Years
- 2) Identifiable Donors & Donation Profile: \$150,000 (2017) → \$164,000 (2018)
- 3) Balance Sheet : \$ 49,000 (2013) → \$119,000 over 5 Years

2018 Charts & Summaries

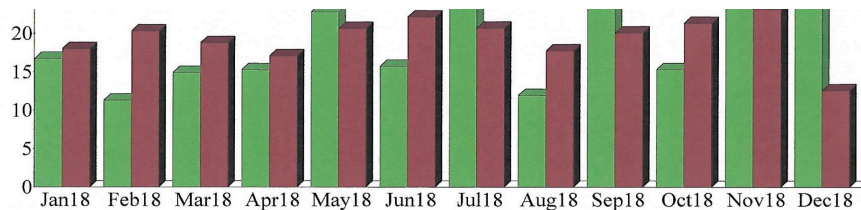


Income Summary
January through December 2018

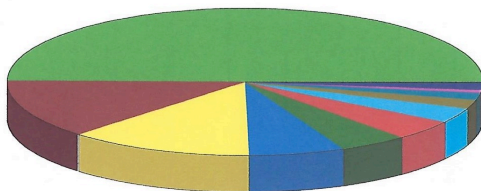


4055 · Offerings	42.28%
4020 · Comm.Partnerships-On-Site	19.07
4035 · Outreach Income	13.53
4015 · Memorial/Cem. Operations	12.39
4010 · Fund Raising Projects	4.40
4026 · Program/Ministry Bequests	3.09
4029 · Programs & Ministry	2.15
4027 · Bldgs/Cem/Maint. Bequests	1.55
4030 · Other Income	0.68
4001 · Rectory Trust Interest	0.58
Other	0.29
Total	\$232,890.63

By Account



Expense Summary
January through December 2018



5300 · Clergy	49.90%
6100 · Assessment	12.90
5900 · Program/Ministry/SBB Staff	12.61
5500 · Interior Site Maintenance	6.56
5200 · Church Bldgs. & Grounds	4.77
5000 · Program & Ministry Admin.	4.56
5800 · Outreach Expense	3.43
5700 · Music Ministry	2.06
6200 · Insurance	1.72
5400 · Fund Raising Expenses	0.68
Other	0.81
Total	\$232,820.56

By Account

11:25 AM

11/01/19

Accrual Basis

Parish of St. Anne and St. Edmund, Parksville
Income & Expense - Summary Report
 January through December 2018

	Jan - Dec 18
Ordinary Income/Expense	
Income	
4000 . Bank Interest	287.89
4001 . Rectory Trust Interest	1,356.92
4002 . Cemetery Trust Interest	198.12
4003 . P/Q Foundation Interest	197.76
4010 . Fund Raising Projects	10,239.20
4015 . Memorial/Cem. Operations	28,847.53
4020 . Comm.Partnerships-On-Site	44,402.00
4026 . Program/Ministry Bequests	7,200.00
4027 . Bldgs/Cem/Maint. Bequests	3,600.00
4029 . Programs & Ministry	5,000.00
4030 . Other Income	1,579.00
4035 . Outreach Income	31,512.38
4055 . Offerings	98,469.83
Total Income	232,890.63
Gross Profit	232,890.63
Expense	
5000 . Program & Ministry Admin.	10,622.70
5100 . Bank Charges	199.62
5105 . Diocesan Loan Interest	1,331.54
5200 . Church Bldgs. & Grounds	11,114.47
5300 . Clergy	116,177.32
5400 . Fund Raising Expenses	1,582.30
5500 . Interior Site Maintenance	15,267.40
5600 . Hospitality	348.76
5700 . Music Ministry	4,789.85
5800 . Outreach Expense	7,991.63
5900 . Program/Ministry/SBB Staff	29,350.01
6100 . Assessment	30,036.00
6200 . Insurance	4,008.96
Total Expense	232,820.56
Net Ordinary Income	70.07
Net Income	70.07

11:15 AM
11/01/19
Accrual Basis

Parish of St. Anne and St. Edmund, Parksville
Balance Sheet
As of 31 December 2018

	31 Dec 18
ASSETS	
Current Assets	
Chequing/Savings	
1090 . TD Operating Account	
1092 . TD One Open Circle - R/F	923.10
1090 . TD Operating Account - Other	24,488.33
Total 1090 . TD Operating Account	25,411.43
1093 . TD Savings Account	60.50
1094 . TD Spirituality Beyond Borders	8,433.92
Total Chequing/Savings	33,905.85
Other Current Assets	
1160 . GST Rebataable Portion	1,255.49
Total Other Current Assets	1,255.49
Total Current Assets	35,161.34
Other Assets	
1120 . Cemeteries Investment	5,184.50
1130 . Rectory Fund Investment	35,000.00
1150 . St.Edmund's Cap. Reno - Phase I	33,267.30
1152 . St.Edmund's Cap. Reno - Phase 2	470.70
1153 . Good Shepherd Cap. Renovations	1,451.28
1155 . Small Capital Renovations	8,566.79
Total Other Assets	83,940.57
TOTAL ASSETS	119,101.91
LIABILITIES & EQUITY	
Liabilities	
Current Liabilities	
Other Current Liabilities	
2200 . Program & Ministry Bequests	28,203.09
2205 . 125th Anniversary Fund	4,863.90
2210 . Program & Ministry	13,763.57
2250 . Cemetery Operations Fund	2,384.23
2300 . Bldgs/Cem/Maint. Bequests	11,382.12
2351 . SpiritualityBeyondBorders Fund	5,241.75
2355 . Membership Loans	5,000.00
Total Other Current Liabilities	70,838.66
Total Current Liabilities	70,838.66
Long Term Liabilities	
2005 . Diocesan Loan (CS & P Fund)	23,694.69
Total Long Term Liabilities	23,694.69
Total Liabilities	94,533.35
Equity	
3000 . Opening Bal Equity	49,939.79
3100 . St. Edmund's Cap. Contributions	30,350.34
3110 . Good Shepherd Cap. Contribution	750.00
3200 . Retained Earnings	-56,541.64
Net Income	70.07
Total Equity	24,568.56
TOTAL LIABILITIES & EQUITY	119,101.91

11:09 AM

Parish of St. Anne and St. Edmund, Parksville

Income & Expense

11/01/19

Accrual Basis

January through December 2018

	Jan - Dec 18
Ordinary Income/Expense	
Income	
4000 . Bank Interest	287.89
4001 . Rectory Trust Interest	1,356.92
4002 . Cemetery Trust Interest	198.12
4003 . P/Q Foundation Interest	197.76
4010 . Fund Raising Projects	
4002 . 125th Anniversary	0.00
4006 . Calendar Sales	149.00
4010 . Christmas Bazaar	5,150.40
4015 . Fall Support Campaign	1,000.00
4030 . Pancake Supper/Lunch	201.00
4032 . Plant & Bake Sale	2,583.80
4050 . St. Anne's Festival	1,155.00
Total 4010 . Fund Raising Projects	10,239.20
4015 . Memorial/Cem. Operations	
4010 . Cemetery	1,200.00
4035 . Recovered Costs	-9,943.47
4015 . Memorial/Cem. Operations - Other	37,591.00
Total 4015 . Memorial/Cem. Operations	28,847.53
4020 . Comm.Partnerships-On-Site	44,402.00
4026 . Program/Ministry Bequests	7,200.00
4027 . Bldgs/Cem/Maint. Bequests	3,600.00
4029 . Programs & Ministry	5,000.00
4030 . Other Income	
4015 . Church of Good Shepherd	700.00
4030 . Envelope Box Donations	52.00
4050 . Miscellaneous	827.00
Total 4030 . Other Income	1,579.00
4035 . Outreach Income	
4002 . Homeless Support	316.00
4015 . St. Paul's Belize	3,000.00
4016 . Discretionary	976.80
4017 . Adult Day Program	3,500.00
4019 . SBB Revenue	
4020 . Grant Revenue	0.00
4022 . Program Revenue	1,190.00
4023 . Donations	6,998.33
4019 . SBB Revenue - Other	12,000.00
Total 4019 . SBB Revenue	20,188.33
4030 . PWRDF	3,531.25
Total 4035 . Outreach Income	31,512.38
4055 . Offerings	
4010 . Envelope & Preauthorized	93,629.70
4020 . Open	2,081.13
4030 . Special - Christmas	1,064.00
4040 . Special - Easter	1,655.00
4050 . Special - Thanksgiving	40.00
Total 4055 . Offerings	98,469.83
Total Income	232,890.63
Gross Profit	232,890.63
Expense	
5000 . Program & Ministry Admin.	
5010 . Accounting	1,426.80
5020 . Office Copier	3,909.56

11:09 AM

11/01/19

Accrual Basis

Parish of St. Anne and St. Edmund, Parksville
Income & Expense
 January through December 2018

	Jan - Dec 18
5030 . Postage	348.49
5040 . Supplies	860.03
5050 . Telephone & Internet	3,307.92
5060 . Miscellaneous	769.90
Total 5000. Program & Ministry Admin.	10,622.70
5100 . Bank Charges	199.62
5105 . Diocesan Loan Interest	1,331.54
5200. Church Bldgs. & Grounds	
5220 . St. Anne's	
5225 . Cemetery	3,022.41
5220 . St. Anne's - Other	2,472.13
Total 5220 . St. Anne's	5,494.54
5230 . St. Edmund's	1,897.63
5235 . St. Mary's	1,000.00
5245 . Small Capital Renovations	0.00
5246 . Municipal & Regional Taxes	2,722.30
Total 5200. Church Bldgs. & Grounds	11,114.47
5300 . Clergy	
5310. Benefits	30,195.61
5320 . Housing	19,687.56
5330 . Stipend	61,246.12
5345 . GrowingThruTeamwork -Transition	5,048.03
Total 5300 . Clergy	116,177.32
5400 . Fund Raising Expenses	
5405 . Calendar Purchase	200.00
5415 . Christmas Bazaar	828.04
5425 . Plant & Bake Sale	432.00
5435 . St. Anne's Festival	122.26
Total 5400 . Fund Raising Expenses	1,582.30
5500. Interior Site Maintenance	
5510 . Cleaning Services	4,470.83
5520 . Maintenance	2,378.61
5530 . Expendable Supplies	1,193.39
5540 . Utilities	6,138.14
5550 . Miscellaneous	1,086.43
Total 5500. Interior Site Maintenance	15,267.40
5600 . Hospitality	348.76
5700 . Music Ministry	4,789.85
5800 . Outreach Expense	
5805 . Church Advertising	121.46
5811 . Homeless Support	316.00
5815 . SBB Program Expenses	
5817 . Admin/Tech//Marketing	259.42
Total 5815 . SBB Program Expenses	259.42
5820 . PWRDF	3,531.25
5841 . St. Paul's Belize	2,700.00
5846 . Discretionary	1,063.50
Total 5800 . Outreach Expense	7,991.63
5900 . Program/Ministry/SBB Staff	
5910 . Prog/Ministry Assistants	
5911 . Wages	22,725.00
5912 . Vacation Pay	909.00
5913 . CPP Employer Portion	842.07
5914 . EI Employer Portion	549.26

11:09 AM

11/01/19

Accrual Basis

Parish of St. Anne and St. Edmund, Parksville**Income & Expense**

January through December 2018

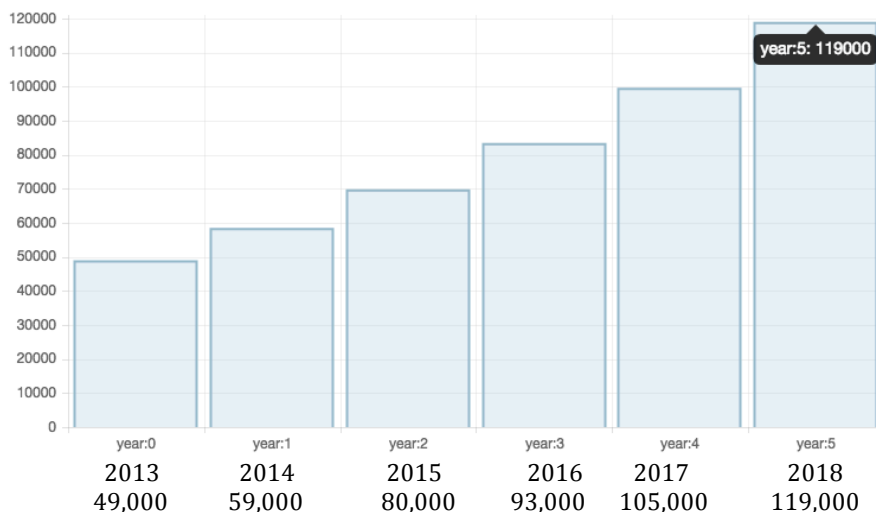
	Jan - Dec 18
5915 · WorkSafe BC	24.68
5916 · Payroll Discrepancy	0.00
Total 5910 · Prog/Ministry Assistants	25,050.01
5930 · Supply & Support Clergy	
5931 · Relief Clergy	3,700.00
5932 · Travel Allowance	600.00
Total 5930 · Supply & Support Clergy	4,300.00
Total 5900 · Program/Ministry/SBB Staff	29,350.01
6100 · Assessment	30,036.00
6200 · Insurance	4,008.96
6500 · Void Cheques	0.00
Total Expense	232,820.56
Net Ordinary Income	70.07
Net Income	70.07

5-Year Financial Overview

1) Balance Sheet : \$49,000 → \$119,000 over 5 Years to 2018

The parish **Balance Sheet** for the calendar years from 2013 to 2018 reflects a change over 5 years from **\$49,000 in 2013 to \$119,000 in 2018**.

This represents a compound annual growth rate of 19%, or an average growth of \$14,000 per annum

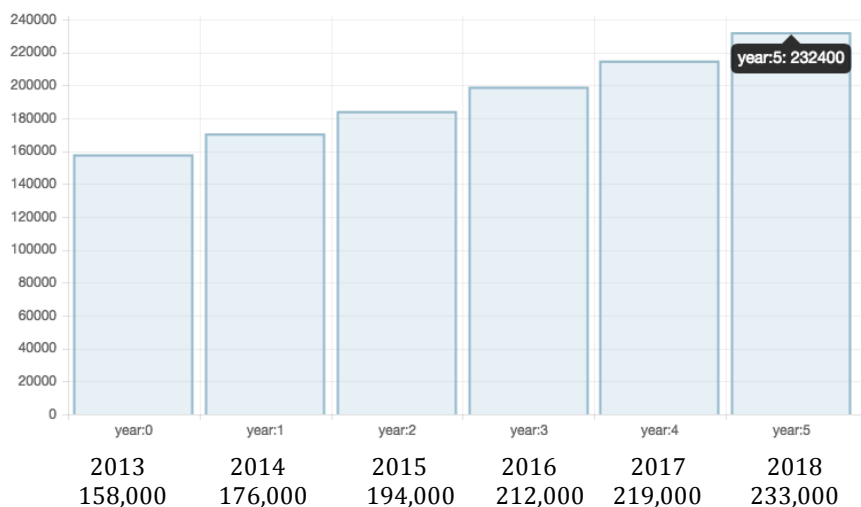


(Note: these numbers are rounded to the nearest 1000, and are exclusive of real estate values for buildings and lands held in the name of the parish).

2) Operational Revenue: \$158,000 → \$233,000 over 5 Years to 2018

The parish **Operational Revenue** for the calendar years from 2013 to 2018 reflects a change over 5 years from **\$158,000 in 2013, to \$233,000 in 2018**.

This represents a compound annual growth rate of 8%, or an average growth of \$15,000 per annum.



(Note: these numbers are rounded to the nearest 1000, and are adjusted for 2016 & 2017, in which revenue & expenses of \$20,000 were included in operational which were in fact of a capital nature)

Two-Year Identifiable Donors & Donation Profile: \$150,000 → \$164,000 (2017-2018)

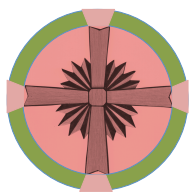
In 2018, we recorded the donations of 171 identifiable adult donors in 124 giving units (couple/families), and issued corresponding receipts for \$164,346.31 in income (+ 9% over 2017), of which \$93,629.70 (+ 10% over 2017) was defined as Sunday offering.

Budget 2019 ~ (with projection for 2020)**Narrative Summary**

Our operating **budget for 2019**, and our **projection for 2020**, is similar to and **reflective of actual income and expenses in 2018**. We are planning for a **balanced budget** in each year. Our 2019 budget projection indicates approximately 4% growth over the 2018 budget, calculated as an increase of \$8,000.

A) Operating Income	2019	2020 (projection)
A.1) Parishioner-Sourced Income		
1.1 Offerings (Plate, Pre-Authorized, & Seasonal)	104,000	108,000
1.2 Memorial Services & Bereavement Ministries	20,000	20,000
1.3 Cemetery Operations	10,000	10,000
1.4 Program & Ministry Bequests/Funds	24,000	24,000
1.5 Bldgs/Cem'y/Maintenance Bequests/Funds	6,000	6,000
1.6 Outreach Donations (flow-through funds)	10,000	10,000
1.7 Other (special events, interest, fundraising)	16,000	17,000
subtotal	190,000	195,000
A.2) Community-Sourced Income		
2.1 Community Partnership Agreements	50,000	55,000
Total Income	240,000	250,000

B) Operating Expenditures	2019	2020 (projection)
B.1) expenditures for: Spirituality & Growth (50% of all that we do)		
1.1 Pastoral Leadership (1.25 FTE stipends, housing & benefits, other clergy support costs)	67,000	69,000
1.2 Global Anglican Ministry Share (our share of regional, national, & international programs & ministry)	15,000	16,000
1.3 Program & Ministry Staffing	19,000	20,000
1.4 Program & Ministry Administration (share of office costs)	6,000	6,000
1.5 Bldgs/Grounds/Cem'y/Maintenance (includes church bldgs & grounds, cemeteries, church hall, other rooms & offices)	10,000	11,000
1.6 Other (insurance, miscellaneous)	3,000	3,000
subtotal	120,000	125,000
B.2) expenditures for: Compassionate Action, Outreach, & Creative Arts (50% of all that we do)		
2.1 Pastoral Leadership (1.25 FTE stipends, housing & benefits, other clergy support costs)	67,000	69,000
2.2 Global Anglican Outreach Share (our share of regional, national, & international programs & ministry)	15,000	16,000
2.3 Community Partnership Staffing	10,000	10,000
2.4 Community Partnership Administration (share of office)	6,000	6,000
2.5 Community Partnership Site Maintenance (partner share of Bldgs/Grounds/Maintenance)	10,000	11,000
2.6 Outreach Donations (flow-through funds)	10,000	10,000
2.7 Other (insurance, miscellaneous)	2,000	3,000
subtotal	120,000	125,000
Total Expenditures	240,000	250,000



The Anglican Community of

Parksville, British Columbia

Saint Anne & Saint Edmund

~ one open circle ~

a centre for spiritual growth, compassionate action, and creative arts

~ ANNUAL VESTRY MEETING 2019 ~ Draft Agenda

Sunday February 03, 2019 ~ 12 noon, St. Edmund's Hall

1. Opening Prayer
2. Appointment of Note-taker/Secretary
3. Adoption of Agenda
4. Minutes of 2018 Annual Vestry Meeting
5. Motion to receive all non-financial reports
6. Financial Reports
7. Budget for 2019, Budget Projection for 2020
8. Nominating Committee Report
9. Elections and Appointments
10. Other Items of Parish Business
11. Motion of Loyalty & support: Bishop Logan; the Queen
12. Closing Prayer, Adjournment, and the Grace

ANNUAL REPORTS: TABLE OF CONTENTS

Report	Pages
Cover Page & Mission Statement	1
<i>Compassionate Action: A Profile of Thirty (30) Programs</i>	2-3
Clergy Reports (Rector & Incumbent, Priest Associate)	4-10
Parish Register: Pastoral Offices	11
Wardens' Report	12
Program & Ministry Reports	13-20
<i>Spirituality Beyond Borders</i>	16-17
Nominating Committee Report	21
Minutes of the Feb 04, 2018 Annual Vestry Meeting	22-23
Financial Reports for 2018	24-30
Budget 2019 (with projection for 2020)	31
Table of Contents, with Draft Agenda for 2019 AVM	32